



ABS Family, Sexual and Domestic Violence Statistics Programme

National Centre for Crime and Justice Statistics

Presented by: William Milne



www.abs.gov.au



History of ABS Family, Sexual and Domestic Violence statistics



Value and challenges of Survey and Administrative by-product data



Personal Safety Survey 2016 spotlight



Where to next?



ABS Family, Sexual and Domestic Violence Products (for reference)



Our Purpose

The ABS purpose is to inform Australia's important decisions by partnering and innovating to deliver relevant, trusted, objective data, statistics and insights.

Our Role

As the central statistical authority for the Australian Government and provider of statistical services to the states and territories, the ABS seeks to deliver the most public value we can from the resources we receive through:

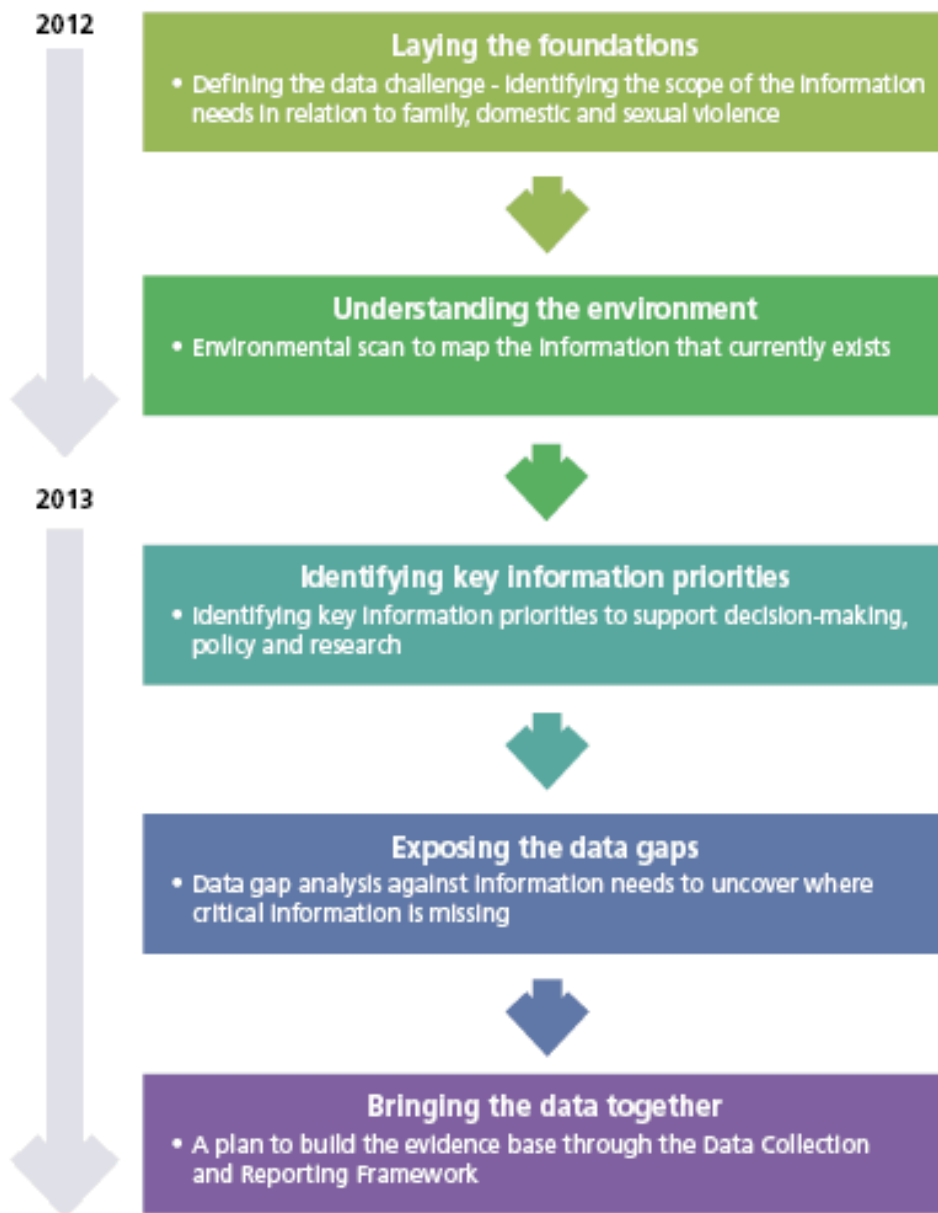
- ▶ providing the statistical information that Australia needs
- ▶ responding to the changing information priorities of our stakeholders

Our Values

In delivering our services to the community, we uphold the Australian Public Service Values.

- ▶ Impartial - we are apolitical and provide the Australian Government with frank, honest and timely advice which is based on the best evidence available.







Administrative by-product data, collected by state/ territory government justice agencies as part of their core business

National survey data, collected from Australian households, asks individuals directly about their experiences of crime, safety and justice.

Which one is better than the other?

No single source of data is able to comprehensively cover all facets of Family, Sexual and Domestic Violence in the community. Australian crime statistics are sourced from both and are used for different purposes.

Australia's most comprehensive source of violence data

Information on the nature and extent of violence and sexual assault experienced by men and women in Australia and other related information regarding people's safety at home and in the community.

Supports [The National Plan to Reduce Violence against Women and their Children 2010 - 2022](#)



Funded by DSS under the National Plan



The scope of the PSS is persons aged 18 years and over in private dwellings across Australia

Both urban and rural areas were included in the survey, except for very remote areas of Australia and Discrete Aboriginal and Torres Strait Islander Communities.

Personal face to face interviews were conducted by specially trained ABS interviewers, in a private setting.



The 2016 Personal Safety Survey:

- approached **36,500** households
- response rate of **68.7%**
- **21,000** fully responding interviews
(15,500 women and 5,500 men)

Resulting in representative sample of women at the national and state and territory level and a representative sample of men at the national level.



Violence

since the age 15 and in the last 12 months

Partner violence

since the age 15 and in the last 12 months

Partner emotional abuse

since the age 15 and in the last 12 months

Abuse

before the age of 15

Sexual harassment

lifetime and in the last 12 months

Stalking

since the age 15 and in the last 12 months



Partner Violence

Source: ABS



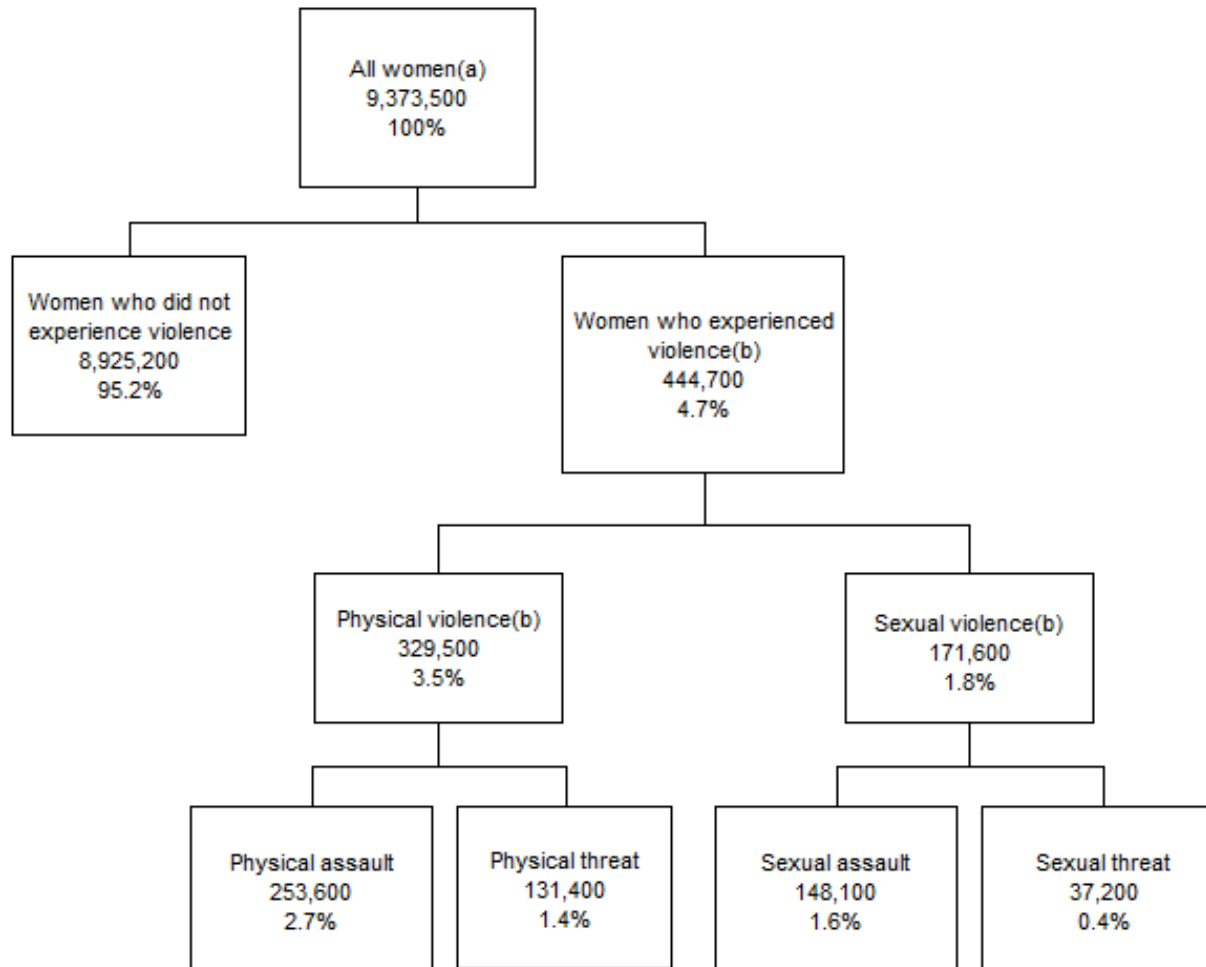
17% of women (1.6 million) and **6% of men** (547,600) had experienced **violence¹ by a partner²** since the age of 15.

¹ Includes physical and/or sexual violence.

² Includes current and/or previous partner (lived with).

The 2016 PSS was funded by the Department of Social Services under the *National Plan to Reduce Violence against Women and their Children 2010–2022*

WOMEN'S EXPERIENCE OF VIOLENCE, IN THE LAST 12 MONTHS



(a) Due to rounding and the effect of perturbation the sum of sub-totals may not add to the total. For more details,

(b) People may have experienced multiple types of violence. Components therefore may not add to the totals.



Frameworks, Information papers

- [4529.0.00.003 – National Data Collection and Reporting Framework for Family, Domestic and Sexual Violence 2014](#)
- [4529.0.00.002 – Bridging the Data Gaps for Family, Domestic and Sexual Violence, 2013](#)
- [4529.0 - Defining the Data Challenge for Family, Domestic and Sexual Violence, 2013](#)
- [4533.0 - Directory of Family and Domestic Violence Statistics, 2011](#)
- [4500.0.55.001 Measuring Victims of Crime: a guide to using administrative and survey data, 2011](#)



Survey data collections

- [4906.0 - Personal Safety Survey, Australia](#)
- [4714.0 - National Aboriginal and Torres Strait Islander Social Survey](#)
- [4530.0 - Crime Victimization, Australia](#)

Administrative data collections – experimental published FDV data

- [4510.0 - Recorded Crime – Victims](#) - *Police data*
- [4519.0 - Recorded Crime – Offenders](#) - *Police data*
- [4513.0 - Criminal Courts, Australia](#)

Administrative data collections – developmental work (no FDV data available as yet)

- [4517.0 - Prisoners in Australia](#) – *Corrective services data*
- *Legal Assistance sector*